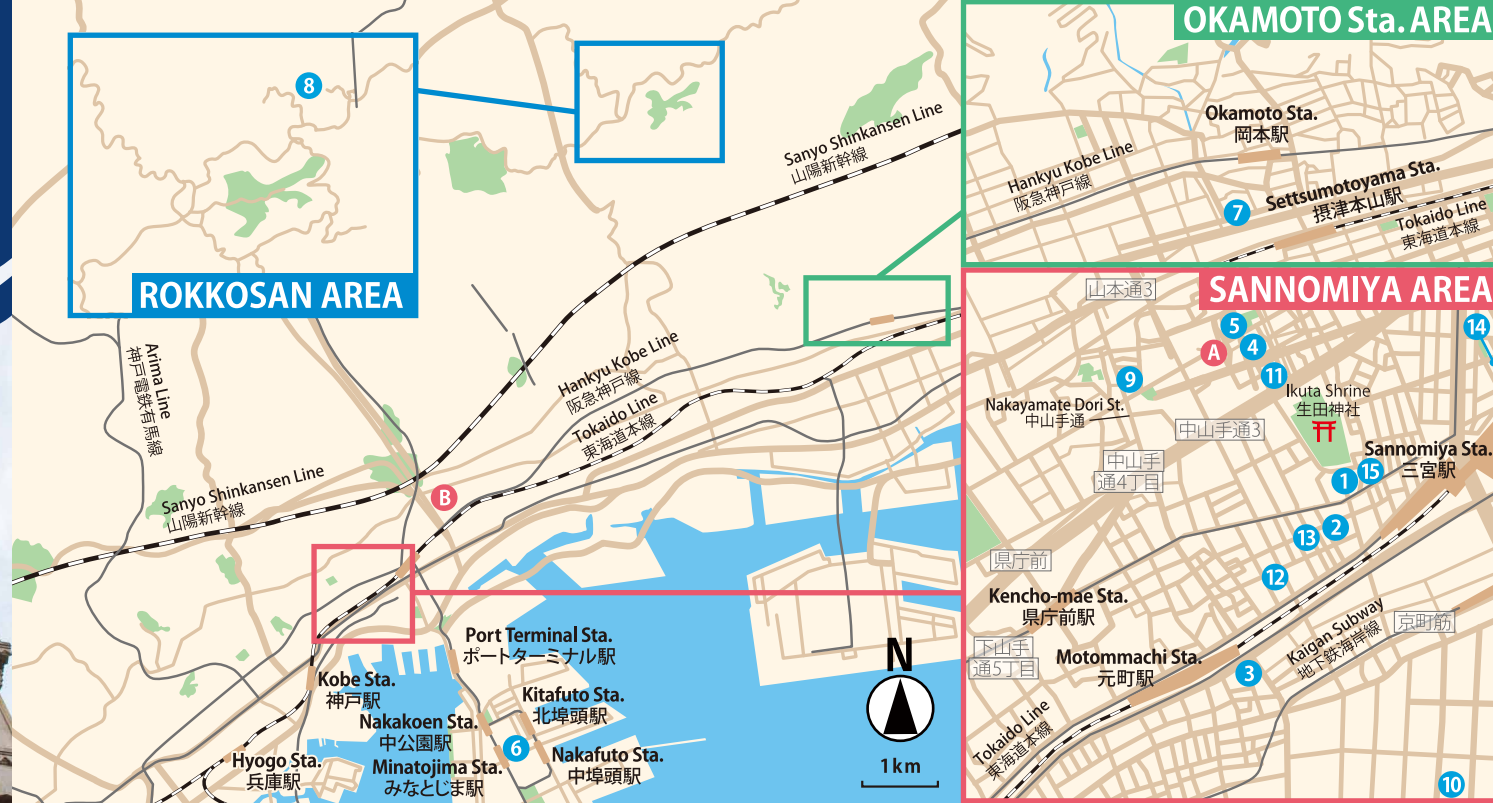


Muslim Friendly Map

Meet Islam in Kobe

ムスリムおもてなしマップ in 神戸
Ver 1, Valid from Nov. 2018



❗ Please ask the staff in advance if you would like to order Muslim-friendly menu

1 The Originator of Teppanyaki Steak
Misono Kobe main store
元祖 鉄板焼ステーキみその神戸本店

11:30-14:30 (L.O.13:30)
17:00-22:00 (L.O.21:00)
Daily Open
+81-78-331-2890
Need Reservation!
Misono Bld. 7.8F, 1-12
Shimoyamatedori,
Chuo-ku, Kobe-shi

3 Kobe Beef Tatsuya
神戸元町 辰屋

10:00-18:00
Closed on Sunday,
National Holiday
+81-78-241-0822
1-13-19 Motomachi-
dori, Chuo-ku,
Kobe-shi

2 Tsuki Usagi
年中万菜録 月うさぎ

12:00-23:00
Irregularly Closed
+81-78-331-3016
Need Reservation!
2-11-5 Kitagagasa-dori,
Chuo-ku, Kobe-shi

4 KOBE HALAL FOOD
神戸ハラルフード

10:30-20:00
Daily Open
+81-78-241-1286
Nishizima Bldg. 1F
2-17-3 Nakayamatedori,
Chuo-ku, Kobe-shi



Icon Guides Prayer space Free Wi-Fi available Credit card available

5 Naan Inn
ナンイン

11:00-22:00
Closed on Monday
+81-78-242-8771
Taniguchi Bldg. 1F
3-12 Yamamoto-dori,
Chuo-ku, Kobe-shi

7 Salon de Sorcière
Salon de Sorcière

10:00-19:00
Closed on Monday
+81-78-453-2228
Need Reservation!
1-4-17 Okamoto,
Higashinada-ku,
Kobe-shi

6 Ariston Hotel Kobe
アリストンホテル神戸

11:00-14:30 (L.O.14:00)
17:00-22:00 (L.O.21:30)
Daily Open
+81-78-303-5555
Minatojimanakamachi
6-1 Chuo-ku, Kobe-shi

8 Rokkosan Snow Park
六甲山スノーパーク

17/11/2018-31/3/2019
weekday: 9:00-16:00
weekday & holiday:
9:00-21:30
+81-78-891-0366
4512-98, Kita Rokko,
Rokkosan-cho, Kobe-shi

- 9 Kollere African
- 12 Pars Cuisine Persian
- 14 Aarti Restaurant Indian
- 10 Gaylord Sannomiya Indian
- 13 Cafe Istanbul Turkish
- 15 MURAT Turkish
- 11 Madras Kitchen Indian

A Kobe Mosque 神戸モスク

+81-78-231-6060
2-25-14 Nakayamate Dori, Chuo-ku, Kobe-shi

B Hyogo Mosque 兵庫モスク

+81-78-855-5506
5-3-15, Kamiwakadori, Chou-ku, Kobe-shi

Dramatic efforts behind the establishment of Kobe mosque



The first step of the establishment of the mosque is in 1928 when Indian merchant started to collect the funds in accordance with the increase of Muslim population in Kobe just after WWI.

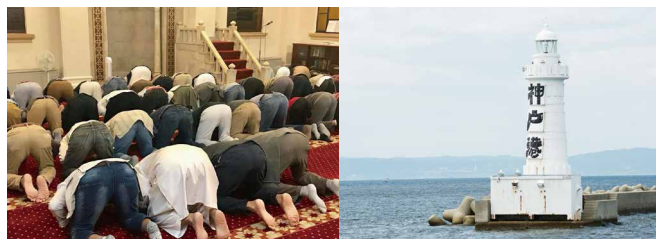
Before that, although some attempts to build a mosque happened, they ended in failure. Ferozuddin, who is one of Indian merchants, shouldered more than half the total amount of fund.

At the same time, Kobe Turkey Tatar Association also saved their living costs and donated much though they were not that wealthy. In addition to them, many Muslims regardless of nationality were desperately contributed themselves in building one. They consisted of Tatars in Korea, Egyptians in Kobe, Syrian merchants, and so forth.

In November 1934, cornerstone ceremony was organized and it is said many people including Afghanistani ministry in Japan, Egyptian consular official in Kobe, British vice-consul official in Kobe, Japanese scholar of Turkey, attended to the event. In 1935, the permission as a mosque was given, and chairman from the mosque committee declared "the opening of the first Islam mosque in Land of the Rising Sun".



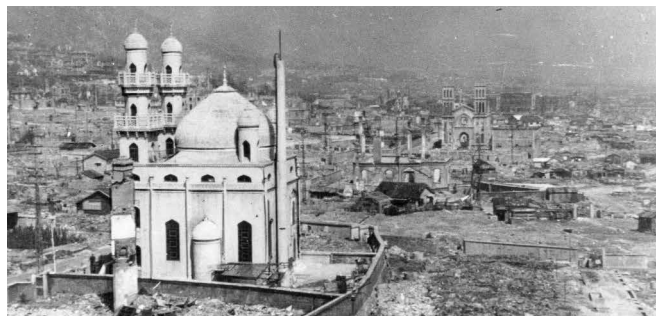
Kobe as a "gate of God"



Mian Abdul Aziz, a chairman of All-India Muslim League, explained that this establishment represents Japan's tolerance to religion while interpreting that Kobe is a "Gate of God" (in Chinese character, "Ko" represents God, "Be" Gate).

And he added that the pronunciation of word "Kobe" is similar to "Koba (Quba)" which refers to Quba' mosque in Medina, Saudi Arabia.

Legacy remains until now



Since the establishment, Kobe mosque had survived major historical events, including its confiscation by the Imperial Japanese Navy in 1943. One of the most remarkable history is Kobe mosque was not destroyed after bombing of Kobe in World War II in 1945 because of its substantial body and sophisticated structure. Even when Han-Shin Awaji Earthquake disaster occurred in 1995, the building was not damaged and accommodated Japanese refugees from disaster. Year by year in Japan, those who are interested in Islam are increasing in number. Now, this mosque opens not only for Muslim but for everyone who would like to know Islam. Some Islamic teachers give a lecture or a talk there periodically to spread knowledge about Islam and enrich relationship between Muslim and Japanese society.



Meet Muslim in Kobe



Zulkarnain (Malaysia)

There are various religious facilities in Kobe that provide you a chance to learn. Please drop by Kobe Mosque if you have time.

Nadhifa Ayunisa (Indonesia)

Kobe is a comfortable place to live in for me because it is rich in nature and we can spend Eid in Kobe Mosque too. I hope there will be more places to pray and eat in the city.



Ana Farhana (Japanese)

Kobe Mosque is where I did Shahadah, so it is important and special to me. I feel how huge and deep Islam is as I can purify myself and meet Muslim friends when I visit the Mosque.

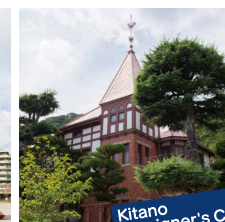


Where to Visit

Night View



Tetsujin 28, Wakamatsu Park



Kitano Foreigner's Club

Further Detail about Sightseeing



Featuring 898 restaurants www.halalgourmet.jp

HALAL RESTAURANT IN JAPAN

HALAL GOURMET JAPAN

HMJ

